

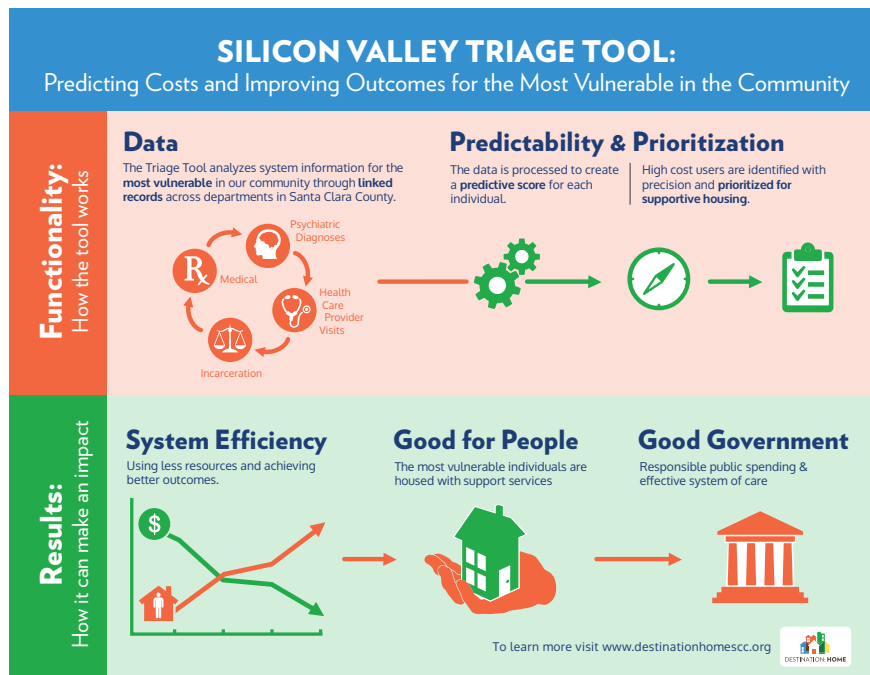
NOTICE

February 17, 2016

NEW TOOL CONNECTS NEEDIEST HOMELESS PERSONS WITH SUPPORTIVE SERVICES

Silicon Valley Triage Tool Enables Counties to Predict Costs and Set Priorities for Supportive Housing

Destination: Home and the County of Santa Clara today announced the Silicon Valley Triage Tool, a new computer model that uses Santa Clara County case records to forecast the public cost of homeless persons and then connect them with permanent supportive housing – a critical life-saving intervention for them and an efficient way of allocating limited public resources. The Triage Tool computer software is a product of the nation’s largest and most comprehensive study on the cost of homelessness, *Home Not Found: The Cost of Homelessness in Silicon Valley*. Government agencies in any county may use this screening software to allocate scarce resources and achieve greater outcomes in housing the most vulnerable, chronically homeless residents. The report and collateral materials may be found on the Destination: Home website, www.destinationhomesc.org.



End